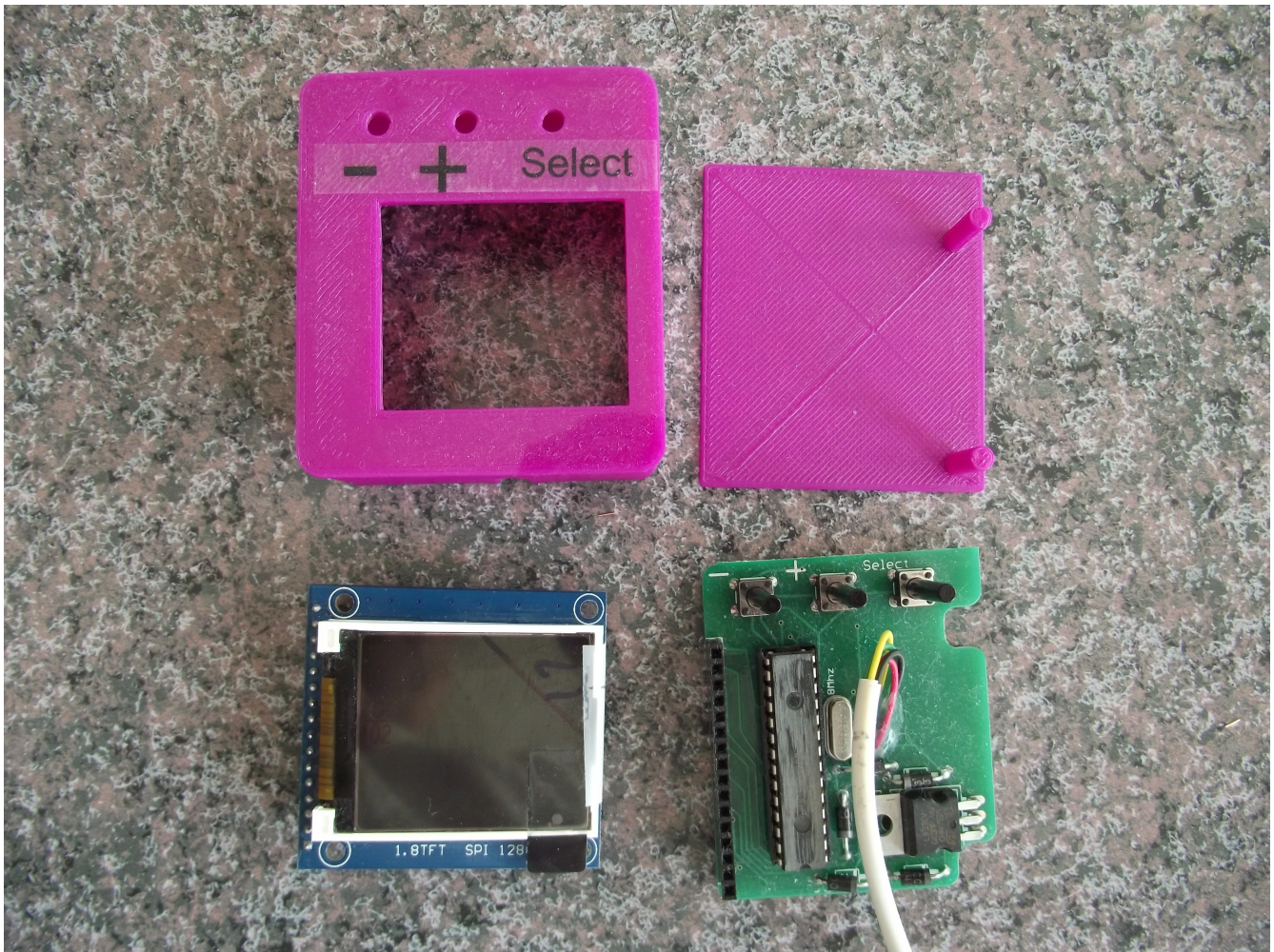


## TFT SCREEN RESET FIX

First step is to load the latest software or firmware onto the TFT Logger. This new software will toggle a pin on the microcontroller to reset the TFT screen a few microseconds after power up ensuring the TFT screen is usable at first power up.

The TFT Logger is composed of these 4 parts: TFT plastic case, TFT back cover, TFT screen, and circuit board.

It is strongly recommended that you use hot glue or epoxy glue on the 4 wires (yellow, black, red, green) to prevent the wires breaking from wire fatigue.

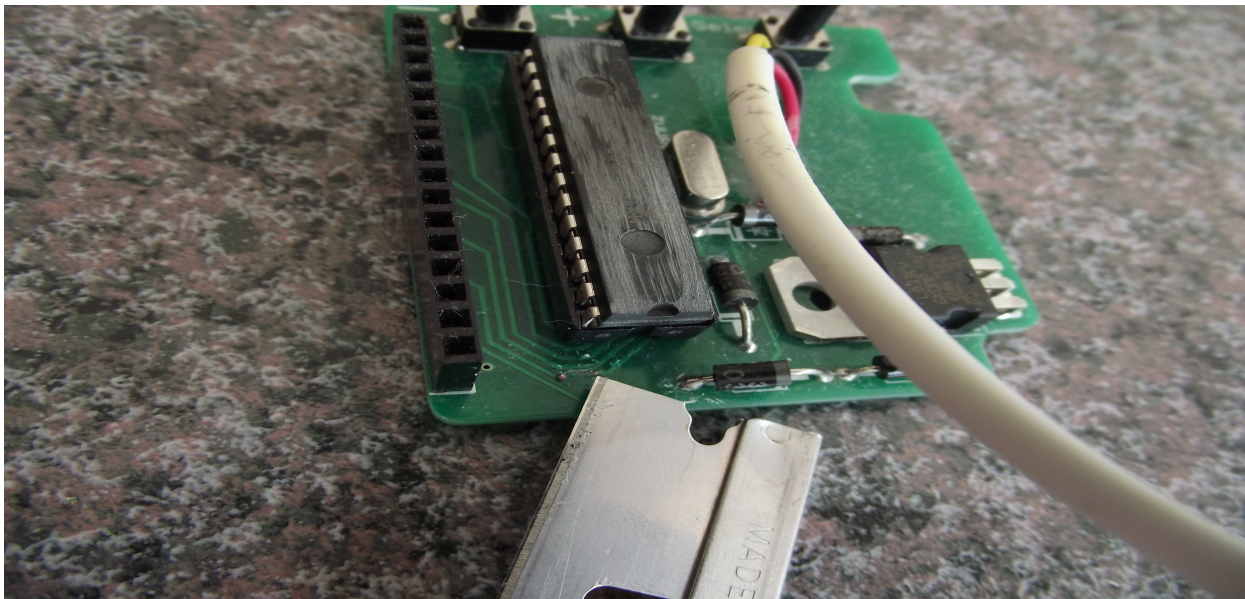




The red circle identifies the location of the circuit board copper trace that we need to break.

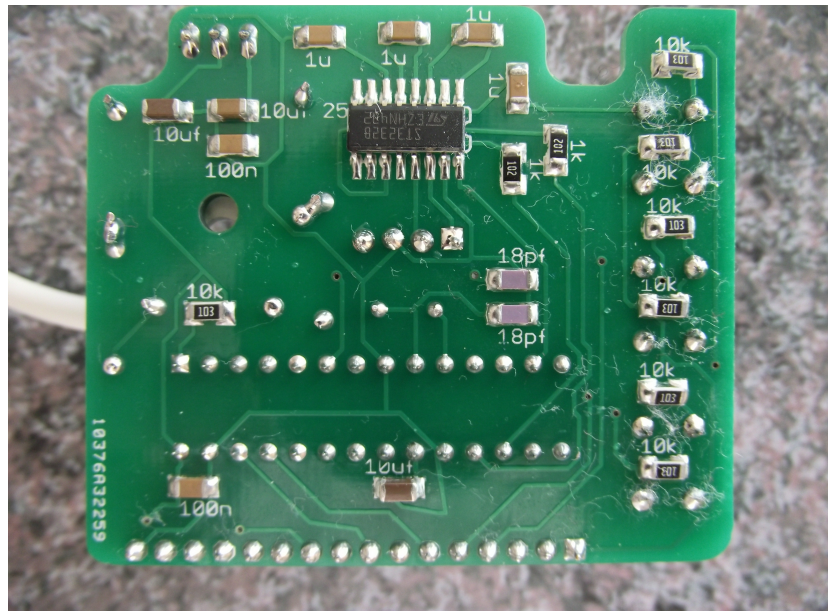


Using a sharp xacto blade or knife, scrape the circuit off. Be careful not to harm the adjacent circuit board traces.

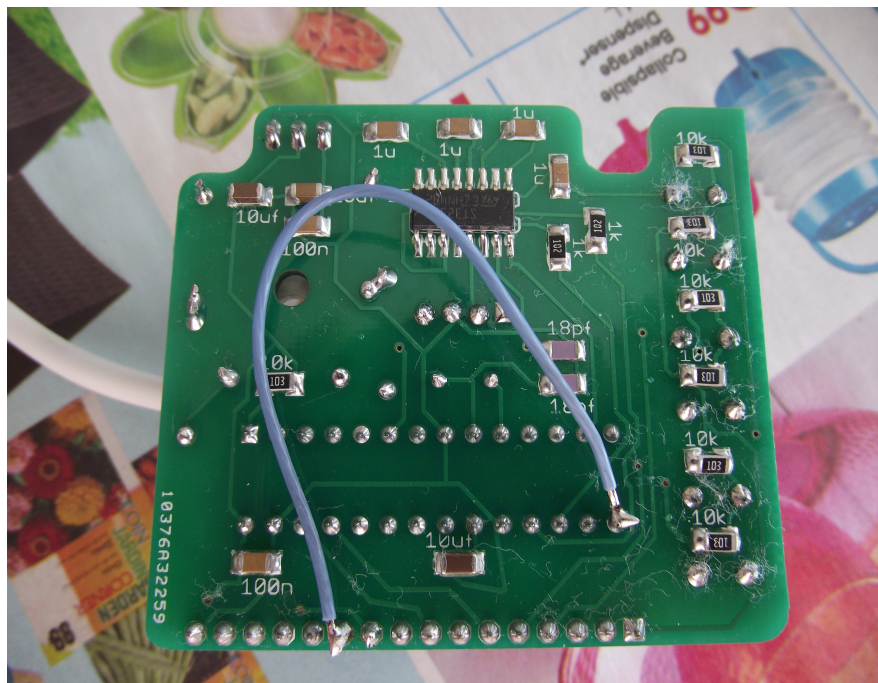




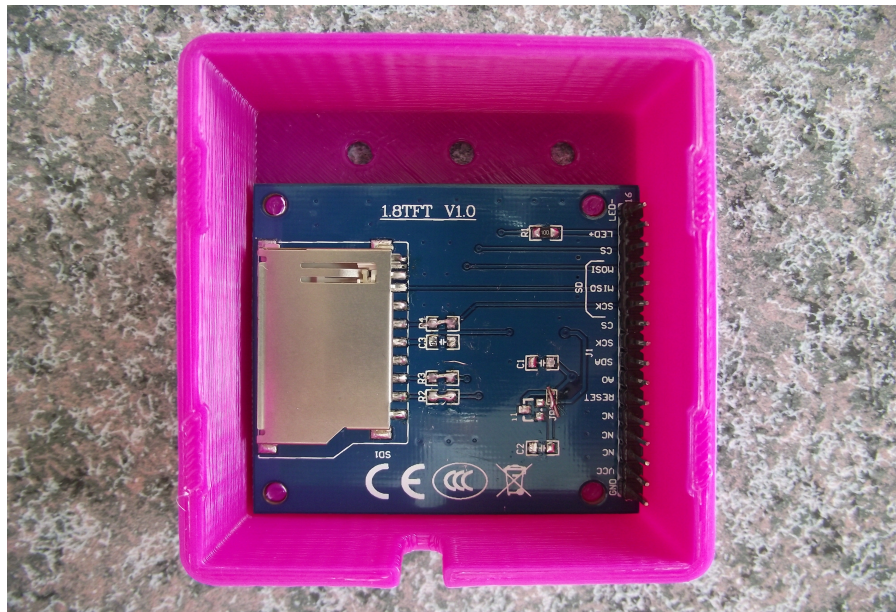
Orientate the circuit board in this fashion.



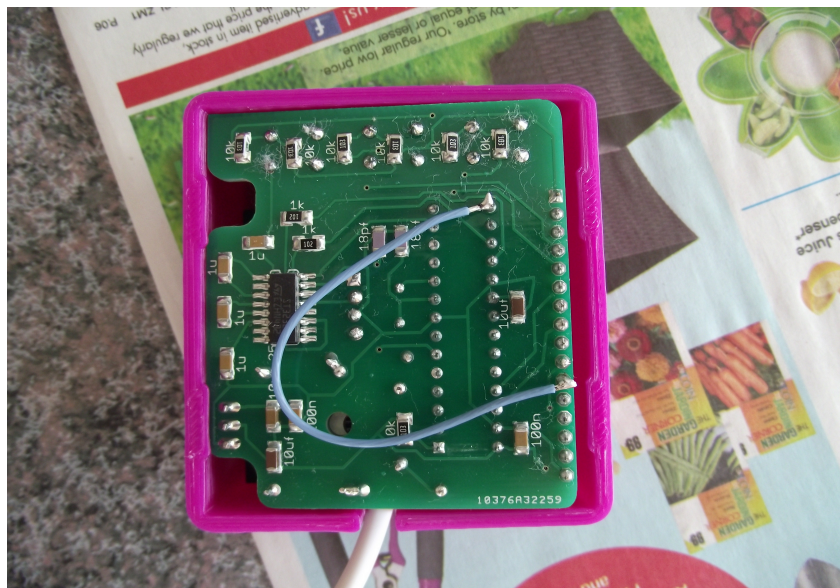
Solder a new wire onto these two pins. Hint, using a long piece of wire makes the job easier.



Verify it works. When it passes, re-assemble in this order. The TFT screen has a snug/tight fit with the plastic case bosses (pegs). Using a rubber pencil, push one end at a time. Flip screen over to verify it is seating correctly.

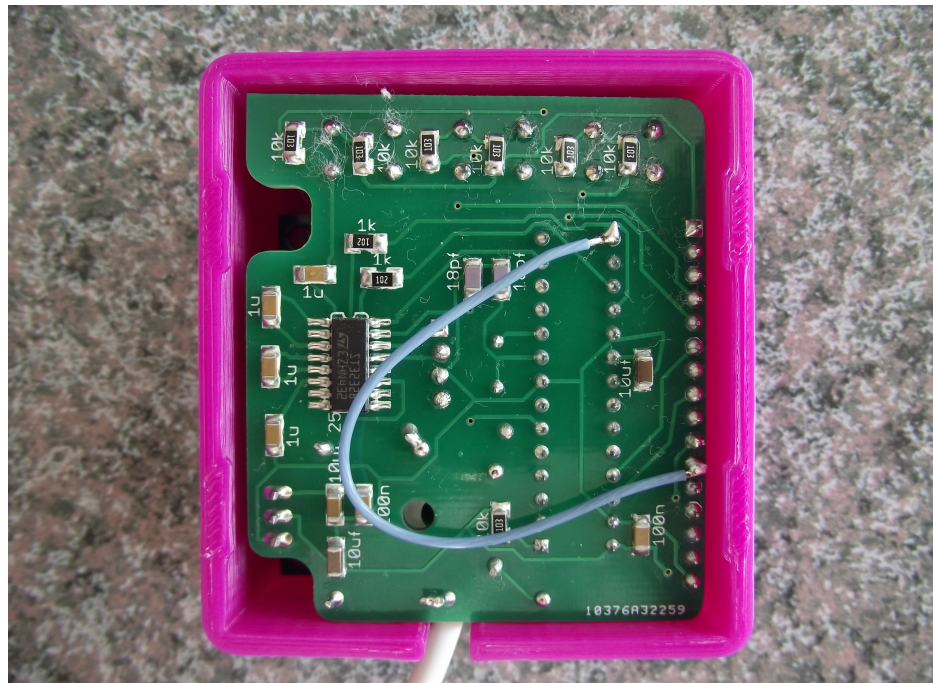


Time to install circuit board, push the end with the 3 push buttons first.





Now push the 16-pin connector onto the 16pin TFT screen.



Take the back cover, and orientate such that the two long legs are facing with 3 push buttons.





Using a small flat heat screw driver, or if you have long finger nails, stretch the plastic case a bit so the cover can pass through the 4 tabs. If you accidentally damage your plastic case, or want it more solid, you may want to use clear silicone on the back. Silicone is nice in that you can still peel it off should you need access to it the future.



All done.